

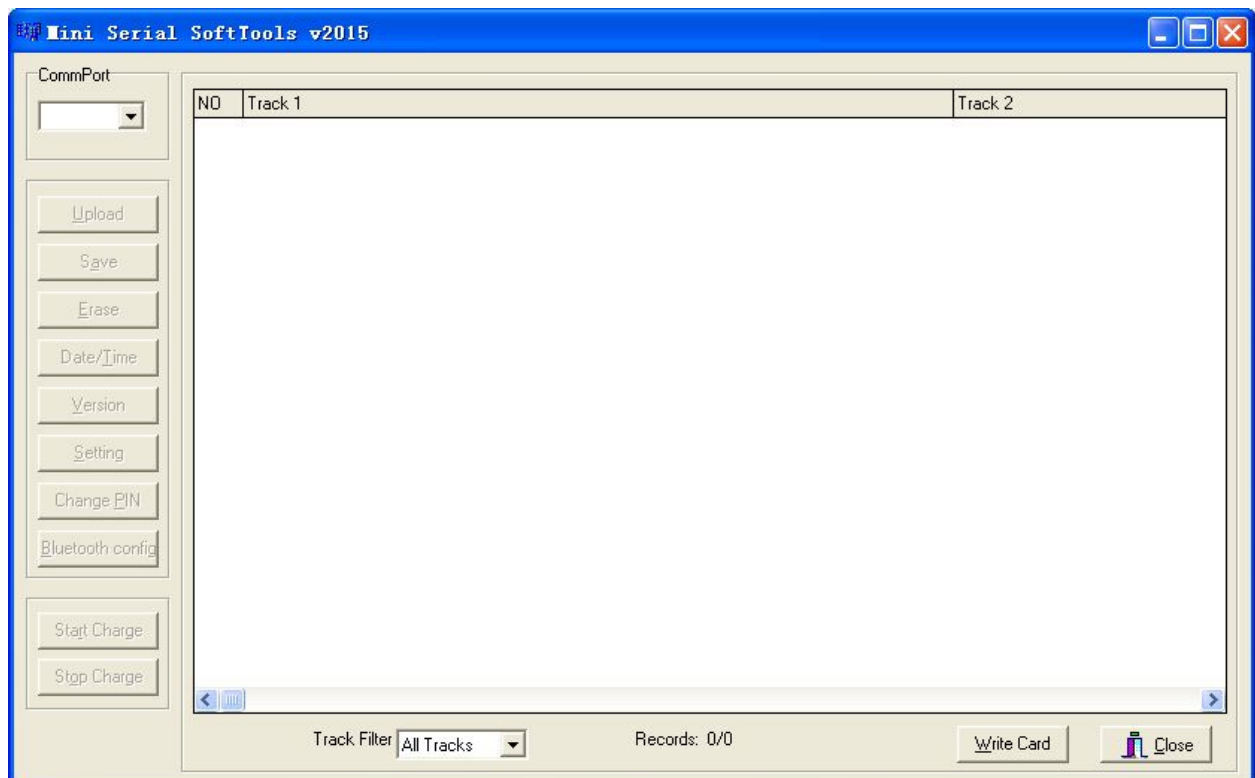
# MiniTools Quick Start

## Step1: Install MiniTools Demo Software.

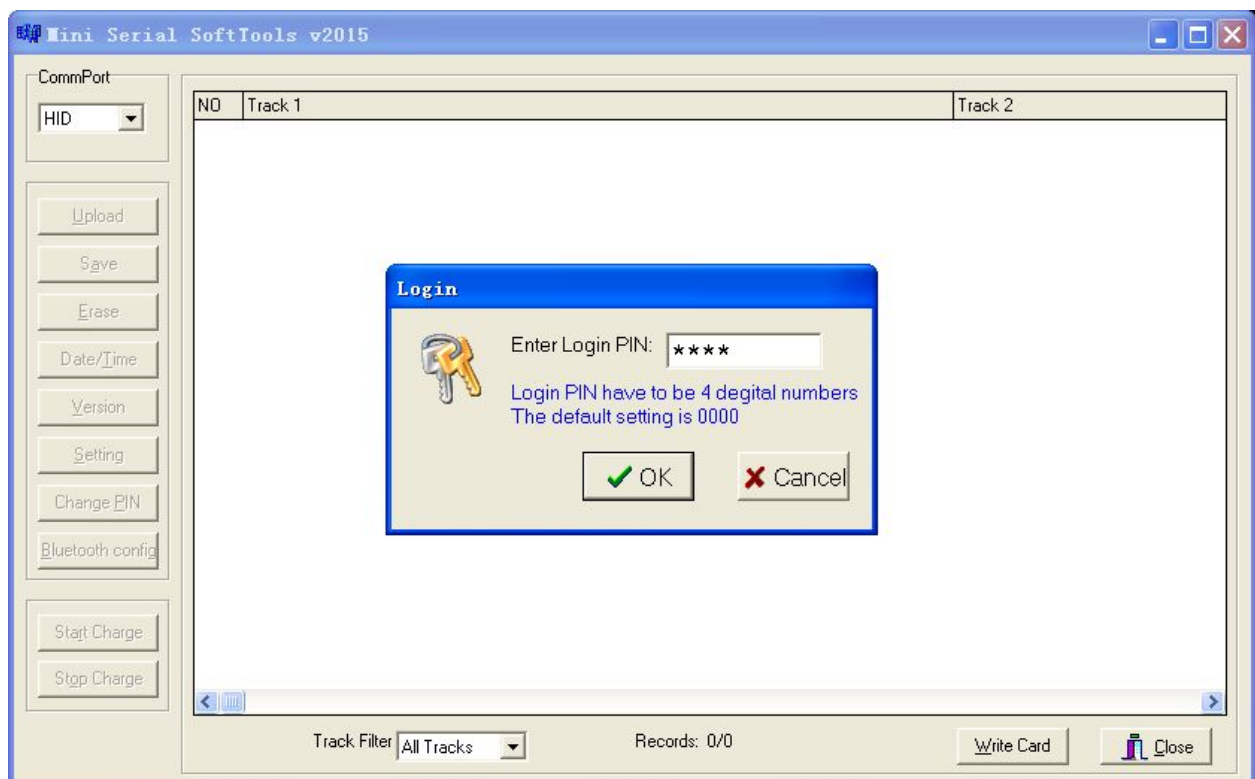
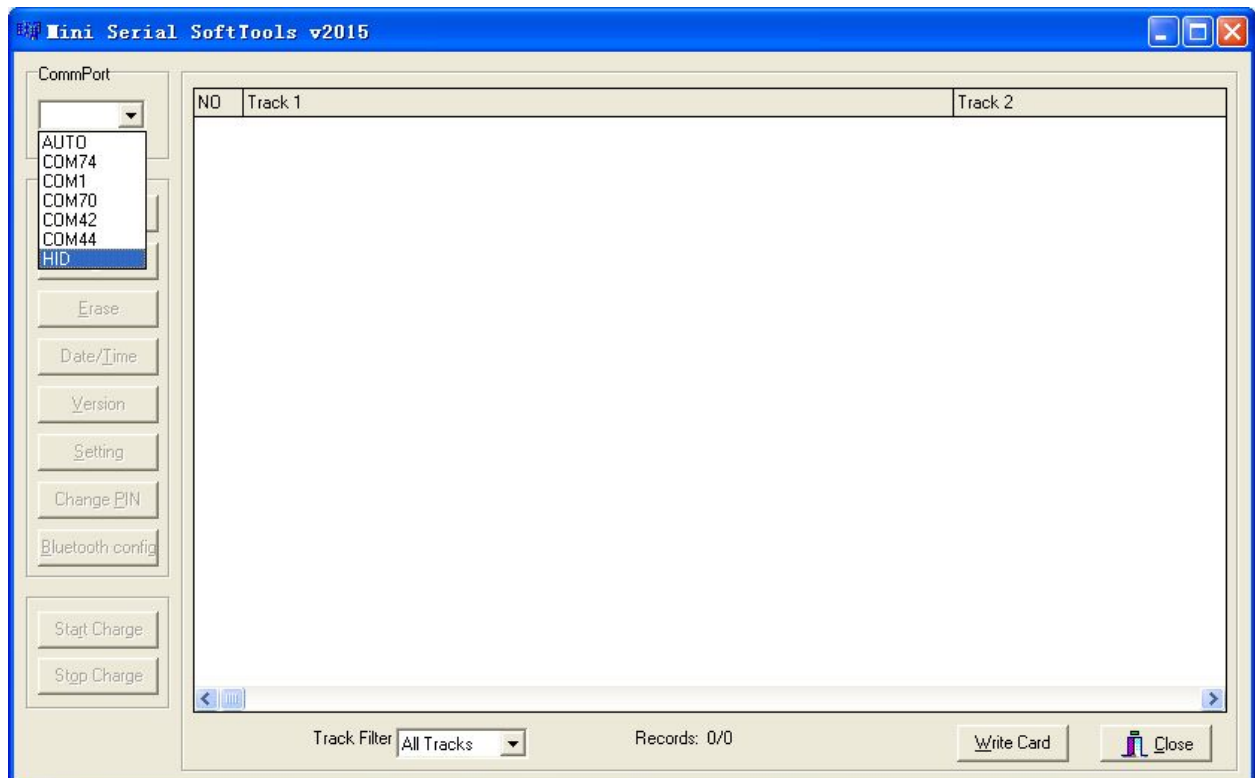
Click CD: \Demo\setup.exe

## Step2: Connect Reader To PC .

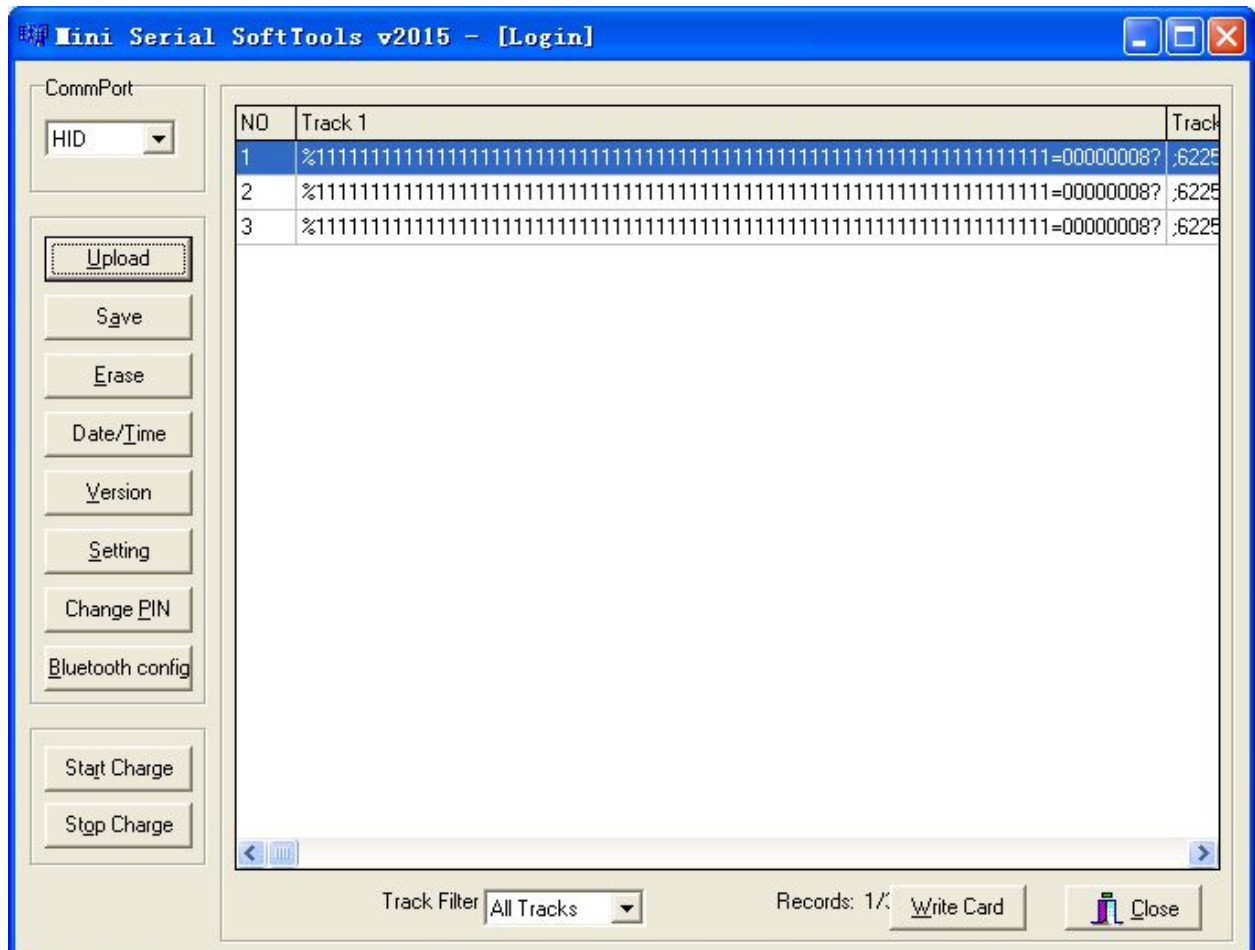
## Step3: Run MiniTools.exe



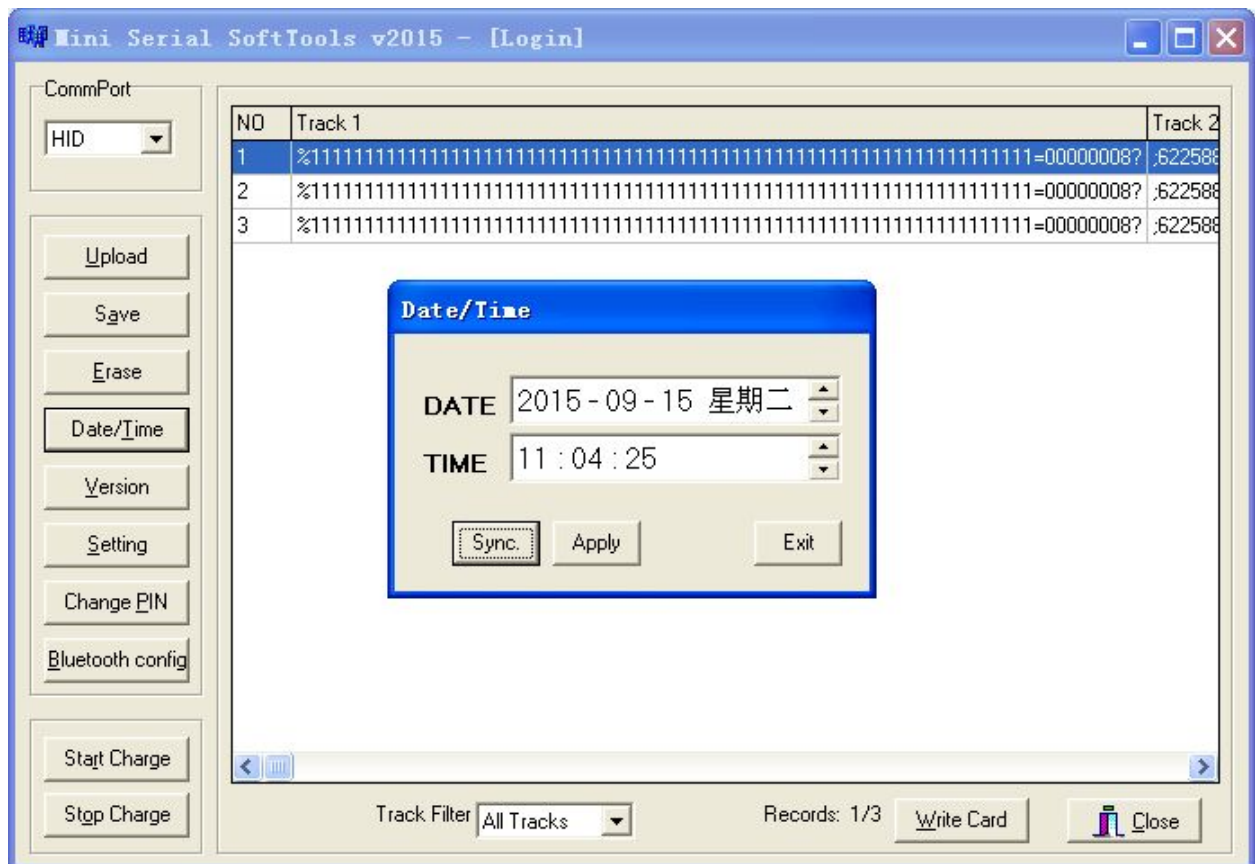
**STEP 4: Select "Auto" to connect the device, or select the one you are sure, then input the password.**



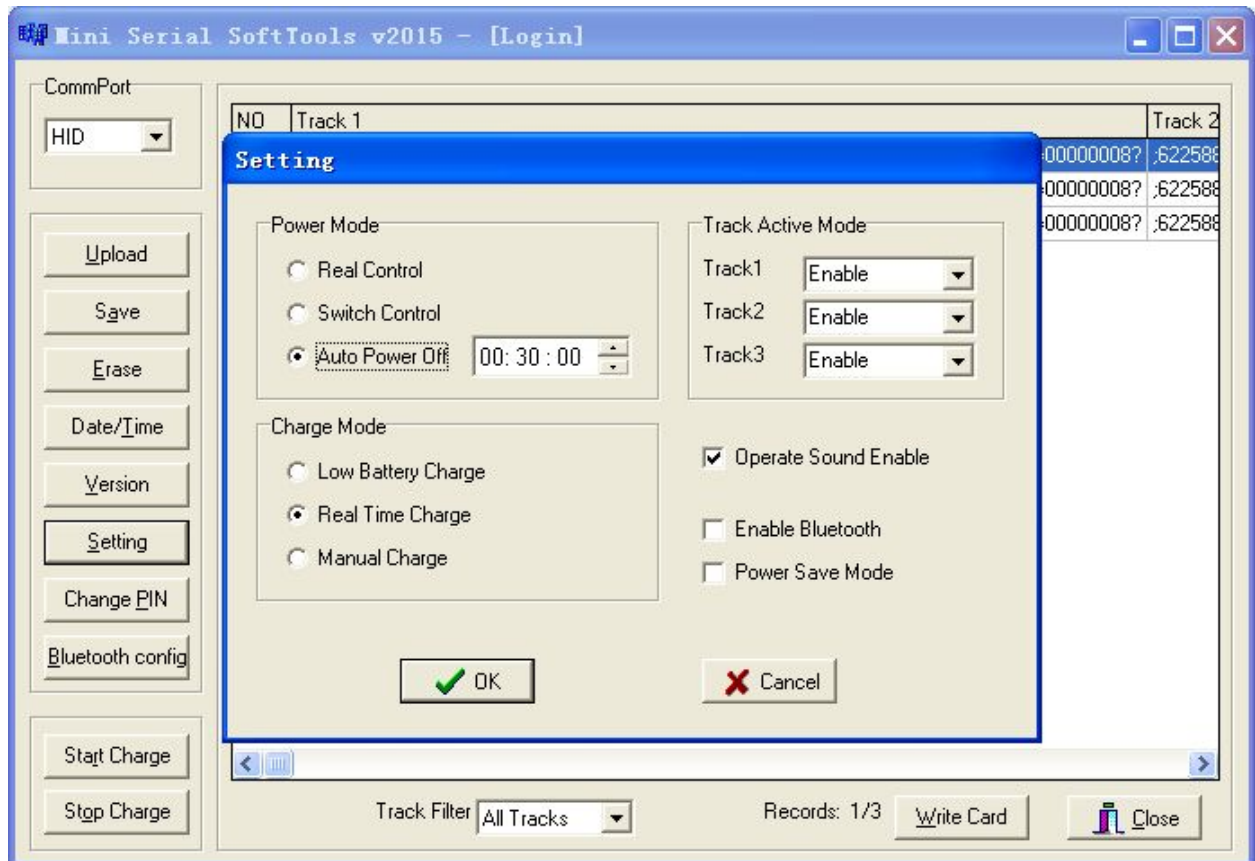
**Step5: Click "Upload", Then you can see the track record, if you swiped card when it working.**



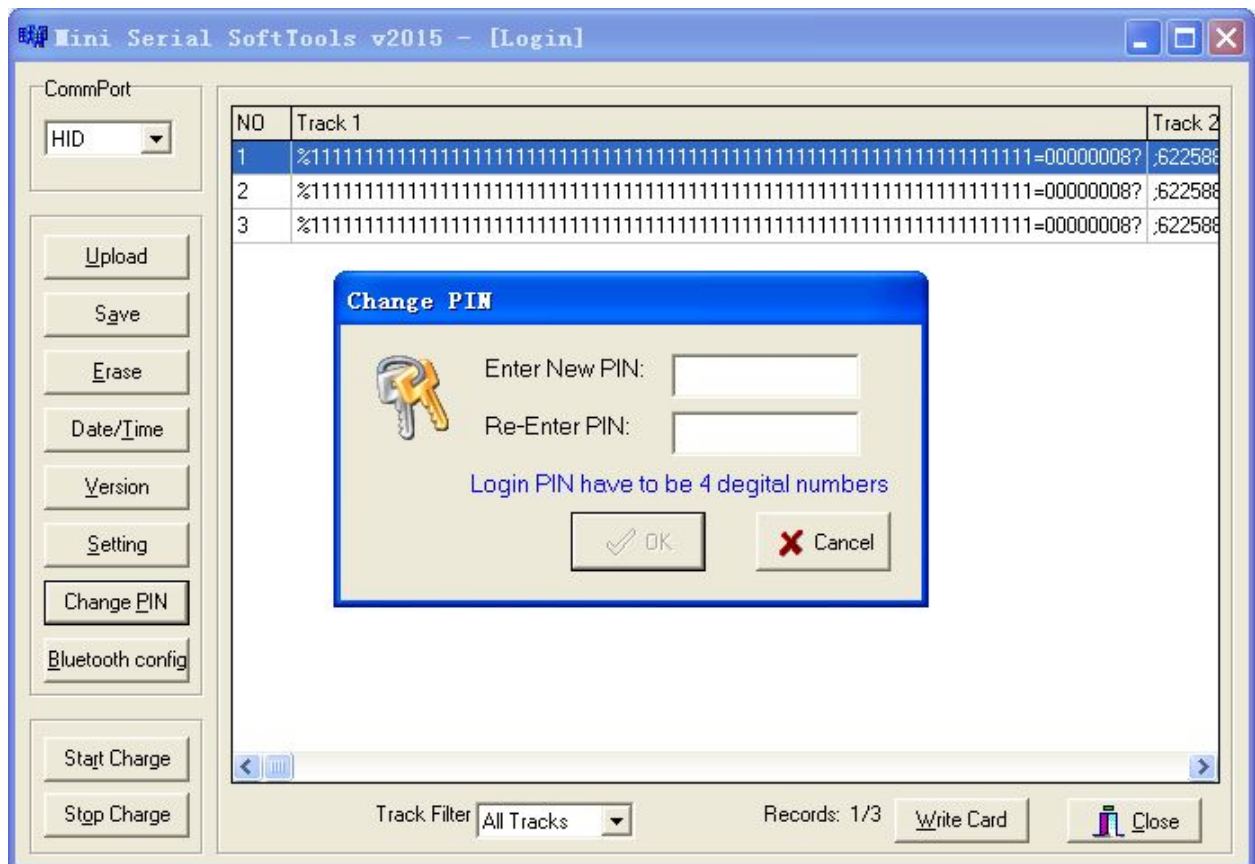
**Step6: Click "Date/Time" can Set or Sync time.**



**Step7: Click "Setting" can Select Power Mode, Charge Mode, Track Active Mode or Enable/Disable operate sound...**



**Step8: Click "Change PIN", then you can change password**



**Step9: Click "Write Card", you can select any card record to write and modify the data.**

